

A CONVERSATION ABOUT HEALTH CARE  
**FEB 23 REFORM OR BUST?** part of **TRIB LIVE** THE TEXAS TRIBUNE EVENTS SERIES  
 TOM BANNING ★ ANNE DUNKELBERG ★ JOHN ZERWAS  
[CLICK FOR DETAILS & TO RSVP](#)

[Go to our mobile site](#) | [Register](#) | [Login](#)

[FRONT PAGE](#) [TOPICS](#) [DATA](#) [BLOGS](#) [DIRECTORY](#) [MULTIMEDIA](#) [EVENTS](#) [TEXAS WEEKLY](#)

[Public Ed](#) [Higher Ed](#) [Immigration](#) [Health Reform](#) [Death Penalty](#) [Energy](#) [Census](#) [Budget Shortfall](#) [Legis Transcripts](#)

# ★ THE TEXAS TRIBUNE

CONTRIBUTE  
★ TODAY ★

[DEMOGRAPHICS](#) [CENSUS](#)

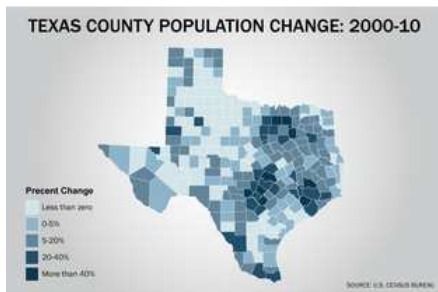
## 2010 Census Data for Texas Released

by [Matt Stiles](#), [Julian Aguilar](#) and [Ryan Murphy](#) | 2/17/2011 | [4 Comments](#)

[Print](#) [Republish](#)

[Share](#) [Comment](#) [Email](#) [Tweet](#) [Recommend](#)

**KEYWORDS:** [Legislative Redistricting Board](#), [U.S. Census Bureau](#), [Redistricting Board](#), [Census](#), [Elections](#), [Texas Redistricting](#), [Texas Redistricting Map](#), [Texas Regions](#)



U.S. [census data](#) released today shows the Hispanic population in Texas increased by 42 percent since 2000, and the group now makes up 38 percent of the population.

Texas' population is now 25,145,561. That's a 4,293,741 increase from 2000's figure and 20.6 percent change. Seventeen counties saw their Hispanic population increase by more than 100 percent.

The numbers will be used to draw new

| City           | 2000      | 2010      | Change |
|----------------|-----------|-----------|--------|
| Houston        | 1,953,631 | 2,099,451 | 7.5%   |
| San Antonio    | 1,144,646 | 1,327,407 | 16.0%  |
| Dallas         | 1,188,580 | 1,197,816 | 0.8%   |
| Austin         | 656,562   | 790,390   | 20.4%  |
| Fort Worth     | 534,694   | 741,206   | 38.6%  |
| El Paso        | 563,662   | 649,121   | 15.2%  |
| Arlington      | 332,969   | 365,438   | 9.8%   |
| Corpus Christi | 277,454   | 305,215   | 10.0%  |
| Plano          | 222,030   | 259,841   | 17.0%  |
| Laredo         | 176,576   | 236,091   | 33.7%  |

[Enlarge](#)  
County population change based on 2000 to 2010 census data.

### REFERENCE MATERIAL

Texas Census Population, Race Totals by County  
[CSV \(40.6 KB\) download](#)

congressional maps, with Texas gaining four new seats in Washington. The data released by the bureau also contain totals for Texas House districts, which ideally would have a population of about 167,000. With population growth changing at different rates by region, districts must be redrawn so they have roughly the same population. Of the 150 Texas House districts, 54 have populations above the ideal size, largely those in the Dallas and Houston suburbs.

The [Texas Democratic Party](#) said the new districts should be drawn to provide a voice for those responsible for the new seats: the Hispanic and African-American communities. And it sounds like it is gearing up for a battle to make sure that happens.

"We will work with Democratic elected officials and take whatever actions are necessary to ensure that any redistricting plan ultimately enacted complies with the Voting Rights Act and restores representation for communities that were shredded by the Republican gerrymanders of 2001 and 2003," said Texas Democratic Party Chairman Boyd Richie.

State Rep. [Carol Alvarado](#), D-Houston, a member of the redistricting committee said: "With the Latino population representing a majority of the new growth and 37.6% of the overall Texas population, the redistricting process should provide for fair and accurate representation of this data and should expand opportunities for Latinos. The Latino community should receive three of the new Congressional

| County         | 2000      | 2010      | Change |
|----------------|-----------|-----------|--------|
| Harris County  | 3,400,578 | 4,092,459 | 20.3%  |
| Dallas County  | 2,218,899 | 2,368,139 | 6.7%   |
| Tarrant County | 1,446,219 | 1,809,034 | 25.1%  |
| Bexar County   | 1,392,931 | 1,714,773 | 23.1%  |

### Sign up for Texas Tribune alerts

Get daily coverage delivered to your inbox

[SUBMIT](#)

[Recommend](#) 150 people recommend this. Be the first of your friends.

The Tribune thanks our Supporting Sponsors



### NEW ON THE TRIB

#### The Midday Brief: Top Texas Headlines for Feb. 18, 2011

by [David Muto](#)  
February 18, 2011

#### The Brief: Top Texas News for Feb. 18, 2011

by [David Muto](#) (4)  
February 18, 2011

#### Small Texas Brewers Want to Tap Into Bigger Market

by [Christopher A. Smith](#) (2)  
February 18, 2011

#### Texas Seeks Medicaid Waiver, but Prognosis Is Poor

by [Emily Ramshaw](#) and [Marilyn Werber Serafini](#), Kaiser Health News  
February 18, 2011

seats or better and should be properly represented in the State Legislature and on the State Board of Education."

Rep. **Burt Solomons**, R-Carrollton, the chair of the House Committee on Redistricting, issued the following statement: "Over the coming weeks and months, the committee will hold hearings where we will have the opportunity to hear from all interested parties. I look forward to this being an open and transparent redistricting process."

Added House Speaker **Joe Straus**, R-San Antonio: "I thank Chairman Solomons and his committee for the hard work and attention they will give to this important task. I look forward to passing fair and legal maps that represent the make-up of Texas."

| County           | 2000    | 2010      | Change |
|------------------|---------|-----------|--------|
| Travis County    | 812,280 | 1,024,266 | 26.1%  |
| El Paso County   | 679,622 | 800,647   | 17.8%  |
| Collin County    | 491,675 | 782,341   | 59.1%  |
| Hidalgo County   | 569,463 | 774,769   | 36.1%  |
| Denton County    | 432,976 | 662,614   | 53.0%  |
| Fort Bend County | 354,452 | 585,375   | 65.1%  |

The **Texas Public Policy Foundation**, an Austin-based conservative think tank, said the growth is due to Texas' healthy economy.

"Though Texas and New York have similar unemployment rates right now, that doesn't come close to telling the real story," said TPPF's Brooke Rollins. "Texas has added 1.78 million job seekers and their families during the last decade, while New York has lost almost 850,000. Businesses want to locate where taxes and government interference are low, and for the last decade, that has meant Texas."

The four congressional seats are the most Texas has gained in a redistricting cycle, according to the TPPF. By contrast it adds, California will not add a congressional seat in a reapportionment for the first time since its statehood in 1850 despite being the nation's most populous state.

The Texas Tribune will continue to update this story with more data and maps as they become available.

Print    Republish    Share    Comment    Email    Tweet    Recommend

**RELATED CONTENT**

No related articles found

**RELATED TOPICS**

- Census
- Legislative Redistricting Board
- Redistricting



**DALLAS FRIDAY GROUP**

The Dallas Friday Group is an organization of more than 400 Dallas-area business executives who share an interest in public affairs and business issues. It is recognized by the *Catchpole Corporation* as one of the **10 top CEO forums in the country.**

[Click here for a list of scheduled programs...](#)

Shared    Viewed    Commented

 **Texas "On the Brink," Legislative Group Says**, by **Emily Ramshaw**  
2,132 people shared this.

 **ACU Students, Wired and Connected, Offer Peek at the Future**, by **Reeve Hamilton**  
167 people shared this.

 **Small Brewers Pushing to Tap Into a Little of the Action**, by **Christopher A. Smith**  
78 people shared this.



**We SAVED for this Rainy Day**

TAKE A **BALANCED APPROACH** TO A **BALANCED BUDGET**

**TEXASForward**

**WE THANK OUR SPONSORS**



A full-service public affairs firm delivering modern solutions to traditional challenges

**WRITERS**

- Julian Aguilar
- Justin Dehn
- Kate Galbraith
- Brandi Grissom
- Reeve Hamilton
- Mark Miller
- Ryan Murphy
- David Muto
- Ben Philpott
- Ross Ramsey
- Emily Ramshaw
- Evan Smith
- Morgan Smith
- Matt Stiles
- Thanh Tan

**TOPICS**

- 2011 Budget Shortfall
- Rainy Day Fund
- Texas-Mexico Border
- 82nd Session Transcripts
- Tom DeLay
- Wind Energy
- Texas Government Payroll
- Immigration
- 2011 House Speaker's Race
- Texas Legislature

- Texas Ethics Commission
- Higher Education
- Environmental Problems and Pol...
- Redistricting
- Texas Department of Transporta...
- Death Penalty
- Voter ID
- Social Studies Standards Debat...

**TT SOCIAL MEDIA**

- Facebook
- Twitter
- YouTube

© 2011 The Texas Tribune

- Terms of Service
- Privacy Policy
- About Us
- Contact Us
- Feeds
- Mobile

**Donate**